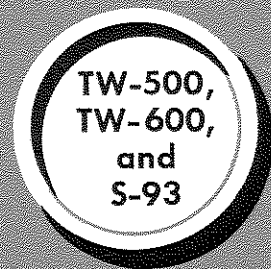




hallicrafters

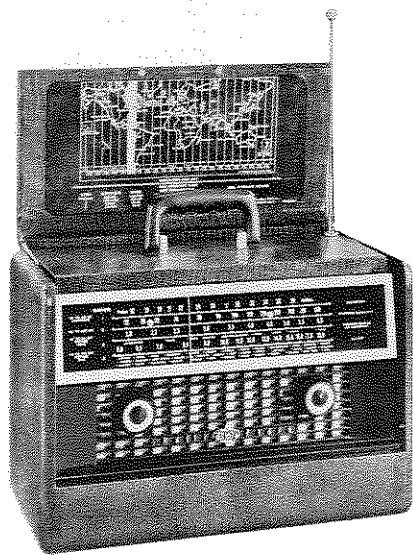
4-Band Portable

SERVICE INSTRUCTIONS



the hallicrafters co.

MANUFACTURERS OF RADIO, TELEVISION AND ELECTRONIC EQUIPMENT, CHICAGO 24, U. S. A.



Model TW-500, green "lizard" leatherette

92X2190

TECHNICAL SPECIFICATIONS

TUBES AND RECTIFIERS 5 tubes plus 1 selenium rectifier.

POWER SUPPLY 105-120 volts DC or 50/60 cycle AC, 90V "B"/9V "A" battery pack, or 220 volts AC/DC with Ballast Adapter 1X1438.

POWER CONSUMPTION 20 watts

SPEAKER 5 inch round; 3.2-ohm voice coil.

INTERMEDIATE FREQUENCY 455 KC

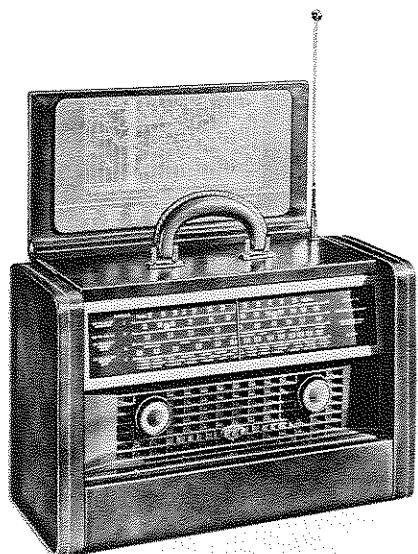
ANTENNA Stick-loop for BC and LW bands, whip for SW bands, and terminals for long wire for use on all bands.

FREQUENCY COVERAGE

| Band | Frequency Range | Reception |
|------|-----------------|----------------|
| 1 | 170 - 415 KC | Longwave |
| 2 | 530 - 1620 KC | Std. Broadcast |
| 3 | 2.0 - 6.0 MC | Shortwave |
| 4 | 6.0 - 18.0 MC | Shortwave |

REPLACEMENT BATTERY PACKS

| Hall-crafters | Burgess | Ever-easy | RCA | Ray O-Vac | Sears |
|---------------|---------|-----------|-------|-----------|-------|
| P1000 | F6A60P | 757 | VS058 | AB909 | 6410 |

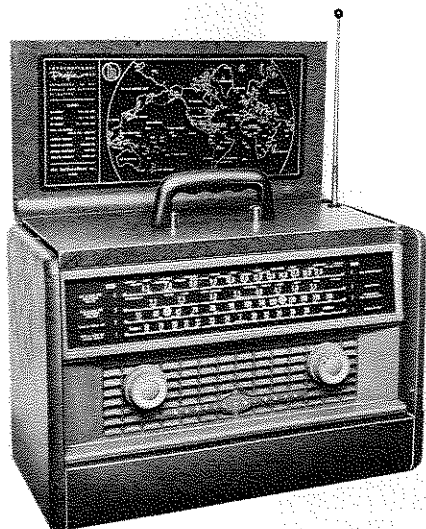


Model TW-600, genuine top-grain cowhide

92X2235

TO REMOVE CHASSIS FROM CABINET

1. Remove the front control knobs by pulling in the outward direction.
2. Disconnect the whip antenna lead at the antenna terminal strip.
3. Remove the 6-32 self-tapping screw at the bottom rear of the cabinet which secures the whip antenna.
4. Remove the whip antenna from the cabinet.
5. Remove the four #10 self-tapping screws at the bottom of the cabinet which secure the chassis.
6. Slide the chassis out through the rear of the cabinet.



Model S-93, Gray Leatherette

92X2368

ALIGNMENT INSTRUCTIONS

- Be sure both the set and the signal generator are thoroughly warmed up before starting alignment.
- Use an accurate signal generator which has a modulated output and covers 455 KC to 14.0 MC.
- Set the volume control at maximum and disconnect the SW whip antenna.
- Use a non-metallic alignment tool with a 3/32"-wide screwdriver blade.
- Connect the output meter across the speaker voice coil.
- To avoid AVC action, use lowest output setting of signal generator which gives satisfactory reading on meter (approx. 50 milliwatts).
- Refer to Figs. 5 and 6 for location of the alignment adjustments.
- The local oscillator frequency is higher than the signal frequency on all bands.

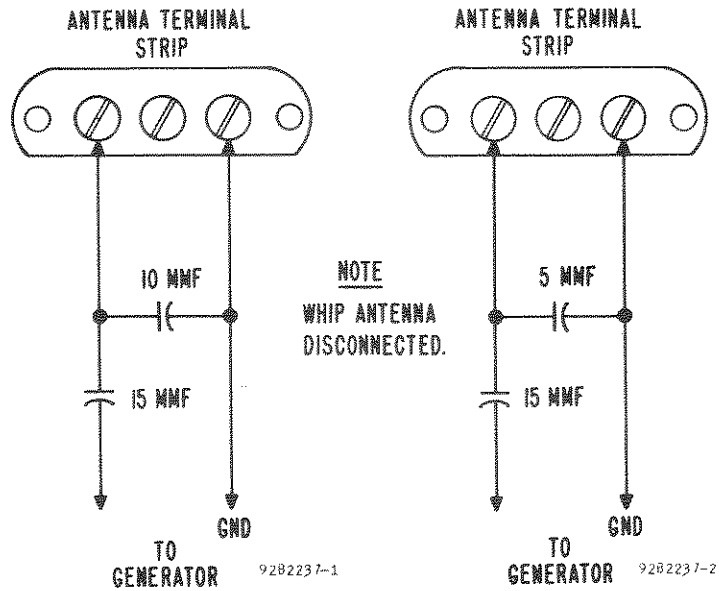


Fig. 3. Dummy Antenna for Band 3

Fig. 4. Dummy Antenna for Band 4

ALIGNMENT PROCEDURE

| Step | Signal Generator Connections | Generator Frequency | Band Selector Setting | Receiver Dial Setting | Adjust for Maximum Output |
|------|---|---------------------|-----------------------|-----------------------|--|
| 1 | High side thru .1 mfd capacitor to stator plates of center section of tuning gang. Low side to chassis. | 455 KC | 2 | 1000 KC | A and B (2nd IF) C and D (1st IF) |
| 2 | Radiate gen. signal into stick-loop antenna. | 360 KC | 1 | 360 KC | E (osc. trimmer), F (mixer trimmer) and G (ant. trimmer) |
| 3 | Same as Step 2. | 200 KC | 1 | 200 KC | H (osc. slug), I (mixer slug), and J (ant. loading slug) |
| 4 | Repeat Step 2. | | | | |
| 5 | Same as Step 2. | 1400 KC | 2 | 1400 KC | K (osc. trimmer), L (mixer trimmer) and M (ant. trimmer) |
| 6 | Same as Step 2. | 600 KC | 2 | 600 KC | N (osc. slug), O (mixer slug), and P (ant. loading slug) |
| 7 | Connect dummy antenna shown in Fig. 3. | 5.0 MC | 3 | 5.0 MC | Q (osc. trimmer), R (mixer trimmer) and S (ant. trimmer) |
| 8 | Same as Step 7. | 2.2 MC | 3 | 2.2 MC | T (osc. slug), U (mixer slug), and V (ant. slug) |
| 9 | Disconnect dummy antenna used for Steps 7 and 8 and connect dummy antenna shown in Fig. 4. | 14.0 MC | 4 | 14.0 MC | W (osc. trimmer), X (mixer trimmer) and Y (ant. trimmer) |
| 10 | Same as Step 9. | 7.0 MC | 4 | 7.0 MC | Z (osc. slug), AA (mixer slug), and AB (ant. slug) |

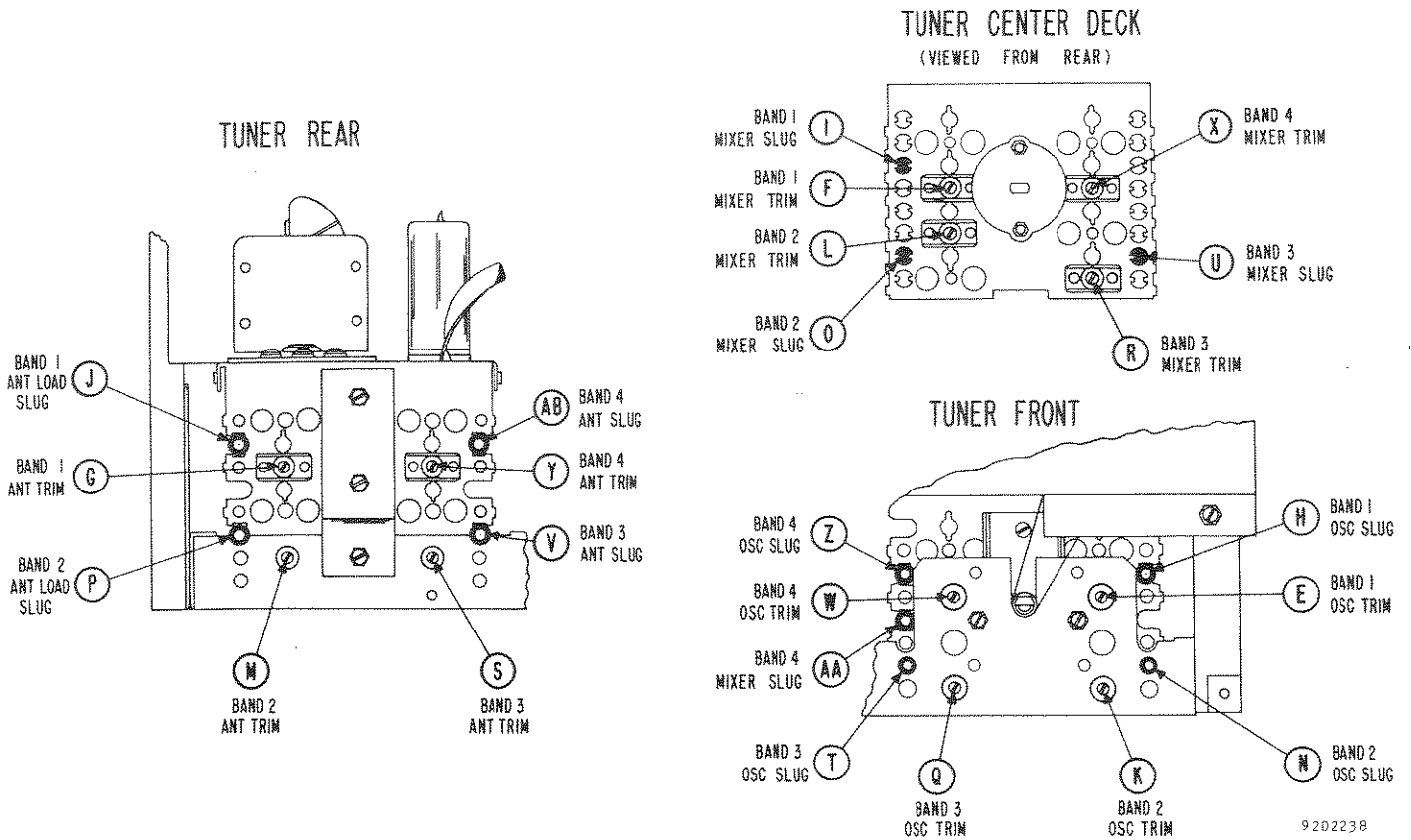


Fig. 5. Tuner Alignment Adjustments

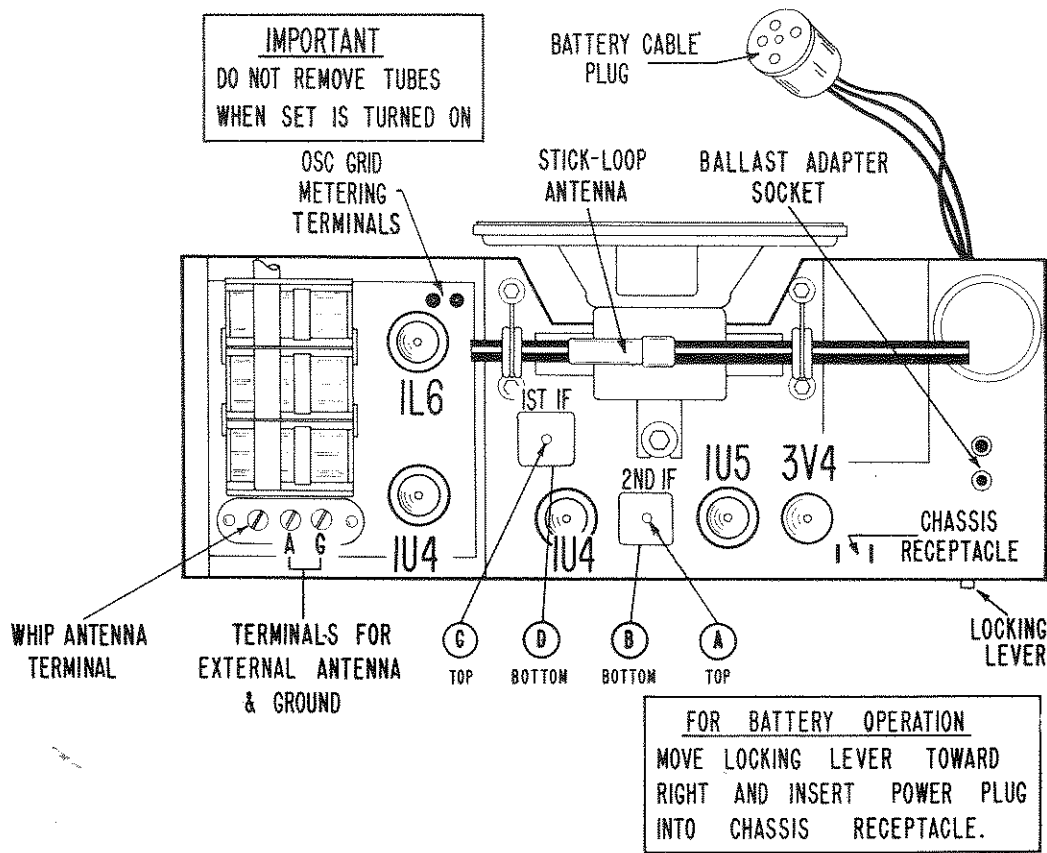


Fig. 6. Top View of Chassis Showing Location of Alignment Adjustments and Tubes

MAIN CHASSIS PARTS LIST

| Schematic Symbol | Description | Hallicrafters Part Number | Schematic Symbol | Description | Hallicrafters Part Number |
|-------------------|---|---------------------------|---|--|---------------------------|
| CAPACITORS | | | COILS AND TRANSFORMERS | | |
| C-1,3,16 | .047 mfd. 200V., molded tubular paper | 46BS473L2 | L-1 | Antenna, stick-loop (less mtg. parts and twin-line) | 57B203 |
| **C-2 | .001 mfd. GMV. 500V., ceramic | 47C20A102N | L-2,3 | Choke, RF; 1.0 Mh | 53A265 |
| C-6 | .005 mfd. 450V., ceramic disc | 47A168 | T-1 | Transformer, 1st IF | 50C233 |
| C-10 | 220 mmfd. 500V., ceramic | 47CA20A221K | T-2 | Transformer, 2nd IF | 50C242 |
| C-11 | .0047 mfd. 600V., molded tubular paper | 46BS472L6 | T-3 | Transformer, audio output (part of speaker LS-1) | ----- |
| C-12,17 | .047 mfd. 600V., molded tubular paper | 46BR473L6 | PLUGS AND SOCKETS | | |
| C-13 | .02 mfd. 500V., ceramic disc | 47A242 | PL-1 | Line cord and plug | 87A3592 |
| C-14 | 100 mfd. 25V., electrolytic | 45B214 | SO-1 | Socket, battery cable (less shell) | 10A296 |
| ⊙C-15 | Dual 40 mfd. 150V., 80 mfd. 150V., 80 mfd. 25V., electrolytic | 45B215 | SO-2 | Shell for socket SO-1 above | 10A294 |
| or | | | | Socket, ballast adapter | 10A507 |
| ⊙C-15 | Dual 40 mfd. 150V., 80 mfd. 150V., 200 mfd. 10V., electrolytic | 45B251 | SR-1 | Socket, tube; 7 pin miniature | 6B297 |
| | | | | Rectifier, selenium; 100 ma | 27B190 |
| | | | TUBES AND RECTIFIERS | | |
| | | | V-1 | 1U4: IF amplifier | 90X1U4 |
| | | | V-2 | 1U5: detector and audio amplifier | 90X1U5 |
| | | | V-3 | 3V4: audio output | 90X3V4 |
| | | | SWITCHES | | |
| | | | S-1 | Switch, on-off (part of Volume control R-5) | ----- |
| | | | S-2 | Switch, power changeover | 60B593 |
| RESISTORS | | | MISCELLANEOUS | | |
| R-1,18,19 | 1000 ohms 10%, 1/2 watt, carbon | 23X20X102K | Clip, IF transformer mtg. | | |
| R-2,3 | 2.2 megohms 10%, 1/2 watt carbon | 23X20X225K | Cord, dial (specify length) | | |
| R-5 | Volume control, 1 megohm (includes on-off switch S-1): for Models TW-500 and TW-600 | 25B1076 | Dial plate, calibrated: | | |
| | | 25B1077 | for Model TW-500, green | | |
| | | 23X20X152K | for Model TW-600, brown | | |
| R-6 | 1500 ohms 10%, 1/2 watt, carbon | 23X20X106K | for Model S-93, black | | |
| R-7,14 | 10 megohms 10%, 1/2 watt, carbon | 23X20X333K | PC-50 | Diode filter plate (includes R-4, C-4, and C-5) | 49A016 |
| R-11 | 33,000 ohms 10%, 1/2 watt, carbon | 23X20X334K | Grommet, rubber; 1/2" od | | |
| R-12 | 330,000 ohms 10%, 1/2 watt, carbon | 23X20X680J | Grommet, rubber, 5/8" od | | |
| R-13 | 68 ohms 5%, 1/2 watt, carbon | 23X20X101J | Lock, line cord | | |
| R-15 | 100 ohms 5%, 1/2 watt, carbon | 23X20X221J | Mounting base for tube shield | | |
| R-16 | 220 ohms 5%, 1/2 watt, carbon | 23X20X152J | Mounting plate for electrolytic capacitor C-15 | | |
| R-17 | 1500 ohms 5%, 1/2 watt, carbon | 23X20X332J | PC-90 | Pentode couplate (includes R-8, R-9, R-10, C-7, C-8 and C-9) | 49B043 |
| R-20 | 3300 ohms 5%, 1/2 watt, carbon | 24B981 | Pointer, dial | | |
| R-21 | 2000 ohms 5%, 10 watts; wire-wound | 23X40X820J | Shield, tube | | |
| R-22 | 82 ohms 5%, 2 watts, carbon | | LS-1 | Snap-in trimount; for mounting chassis bottom plate | 76A1055 |
| | | | Speaker assembly, 5" PM; 3.2 ohm voice coil (includes output transformer T-3) | | |
| | | | Spring, dial cord tension | | |

⊙ See part number stamped on side of capacitor.

** Guaranteed Minimum Value.

TUNER CHASSIS PARTS LIST

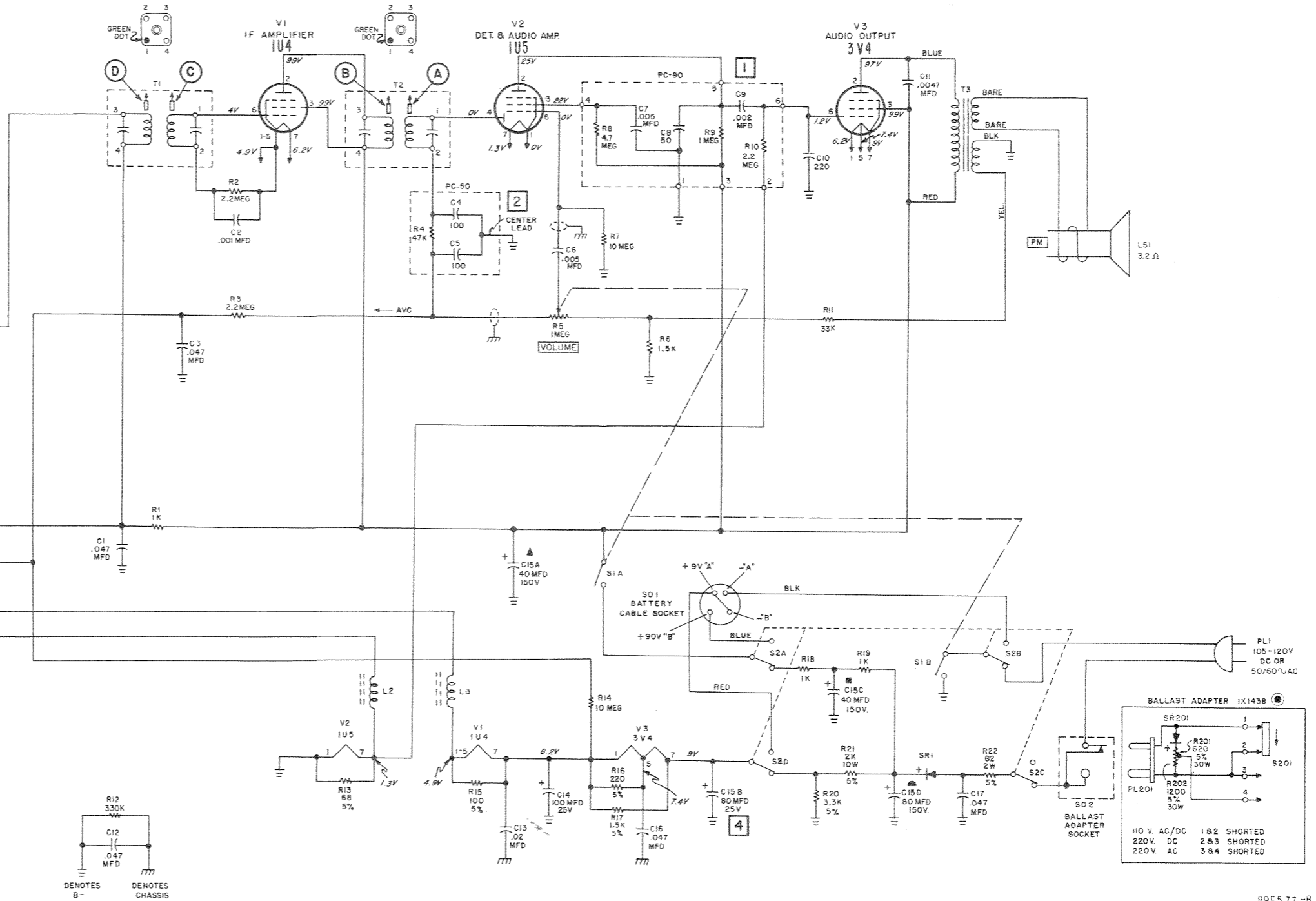
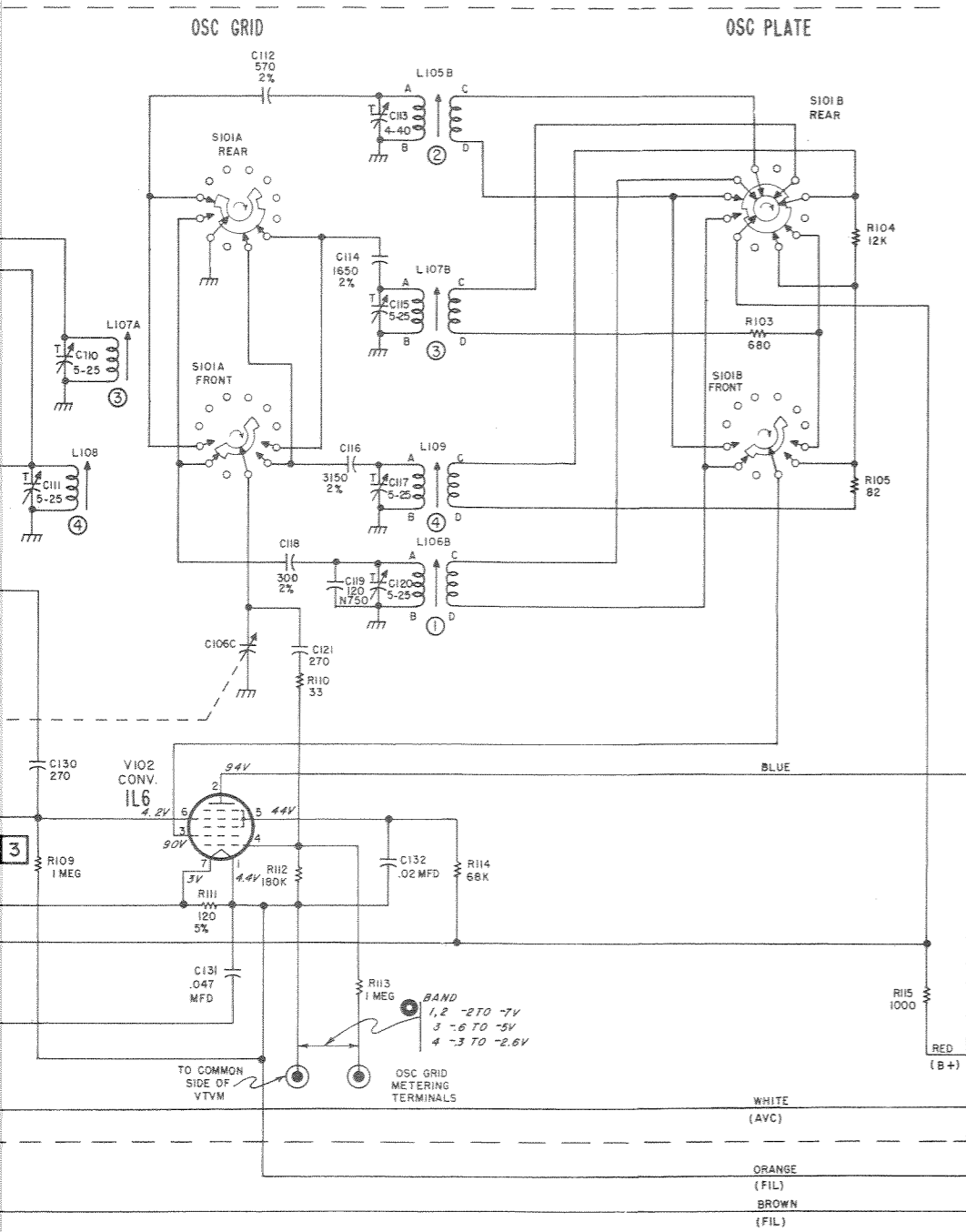
| Schematic Symbol | Description | Hallicrafters Part Number | Schematic Symbol | Description | Hallicrafters Part Number |
|---|-----------------------------------|---------------------------|-------------------|-----------------------------------|---------------------------|
| CAPACITORS | | | CAPACITORS | | |
| C-101,104,105,107,108,110,111,115,117,120 | 5-25 mmfd.; ceramic trimmer | 44A446 | C-106 | Tuning capacitor, 3 section | 48C326 |
| *C-102,122 | 22 mmfd. 10%, NPO, 500V.; ceramic | 47X20CG220K | *C-109 | 39 mmfd. 5%, NPO, 500V.; ceramic | 47X30CG390J/D |
| C-103,113 | 4-40 mmfd.; ceramic trimmer | 44B443 | C-112 | 570 mmfd. 2%, 500V.; silver mica | 47X20C571G |
| | | | C-114 | 1650 mmfd. 2%, 500V.; silver mica | 47A445 |
| | | | C-116 | 3150 mfd. 2%, 500V.; silver mica | 47B446 |

* USE EXACT REPLACEMENT ONLY

PRODUCTION CHANGES

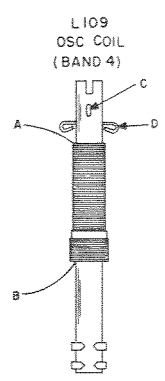
Production changes are indicated on the schematic diagram by the numerical symbols 1, 2, 3, etc. When replacing components listed below, use the value or type indicated on the schematic diagram.

- 1 Pentode couplate changed. The type PC-91 pentode couplate used to couple V-2 to V-3 was replaced by a type PC-90. The PC-91 and PC-90 are identical except for the values of C-8 and C-9. C-8 is 100 mmfd in the PC-91 and 50 mmfd in the PC-90. C-9 is .005 mfd in the PC-91 and .002 mfd in the PC-90.
- 2 Diode filter plate changed. The type PC-52 diode filter plate was replaced by a type PC-50. The PC-52 and PC-50 are identical except for the values of C-4 and C-5. In the PC-52, C-4 and C-5 are 50 mmfd. In the PC-50, they are 100 mmfd.
- 3 R-109 decreased in value. R-109, mixer grid resistor, was changed from 10 megohms to 1 megohm. Note: In some sets, R-109 was 8.6 megohms instead of 10 megohms (3.9 megohm resistor on the tuner chassis in series with a 4.7 megohm resistor on the main chassis).
- 4 Value and voltage rating of C-15B, changed. C-15B filament filter section of the quad-section electrolytic capacitor, was changed from 200 mfd, 10 volts to 80 mfd, 25 volts.



NOTES

- 1. RESISTORS ARE 1/2 WATT AND 10% UNLESS OTHERWISE SPECIFIED.
 - 2. RESISTANCE IN OHMS AND CAPACITANCE IN MMF UNLESS OTHERWISE SPECIFIED. K=1000
 - 3. INTERMEDIATE FREQUENCY = 455 KC.
 - 4. POWER CHANGEOVER SWITCH S-2 SHOWN IN AC/DC POSITION. FOR BATTERY OPERATION, INSERT LINE CORD PLUG INTO CHASSIS RECEPTACLE (SEE FIG.6).
 - 5. LINE VOLTAGE: AC/DC OPERATION - 117 VOLTS
BATTERY OPERATION - 90V "B" AND 9V "A"
 - 6. ALL VOLTAGES MEASURED WITH VTVM BETWEEN TUBE SOCKET TERMINALS AND B-($\frac{1}{2}$). VOLTAGES ARE DC AND POSITIVE UNLESS OTHERWISE SPECIFIED.
 - 7. ALL VOLTAGES ARE MEASURED WITH ANTENNA TERMINALS AND STICK-LOOP ANTENNA SHORTED.
 - 8. BAND SELECTOR SWITCH S101 SHOWN IN BROADCAST POSITION. (BAND 2). ALL SWITCH SECTIONS ARE AS VIEWED FROM FRONT OF SET.
- AVAILABLE AS AN ACCESSORY.
● VOLTAGE VARIES WITH SETTING OF TUNING GANG.

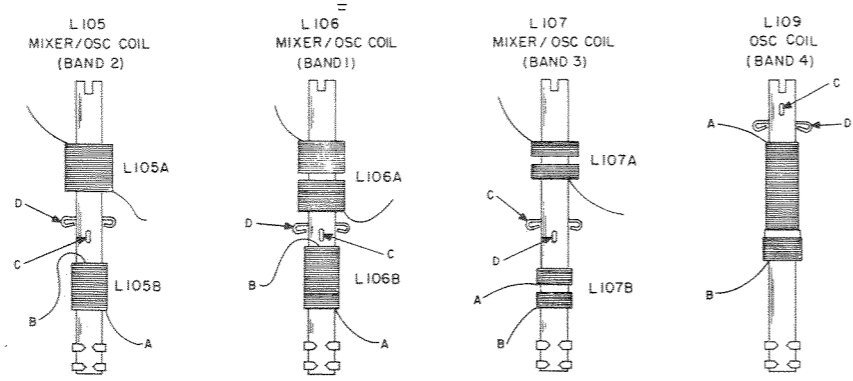
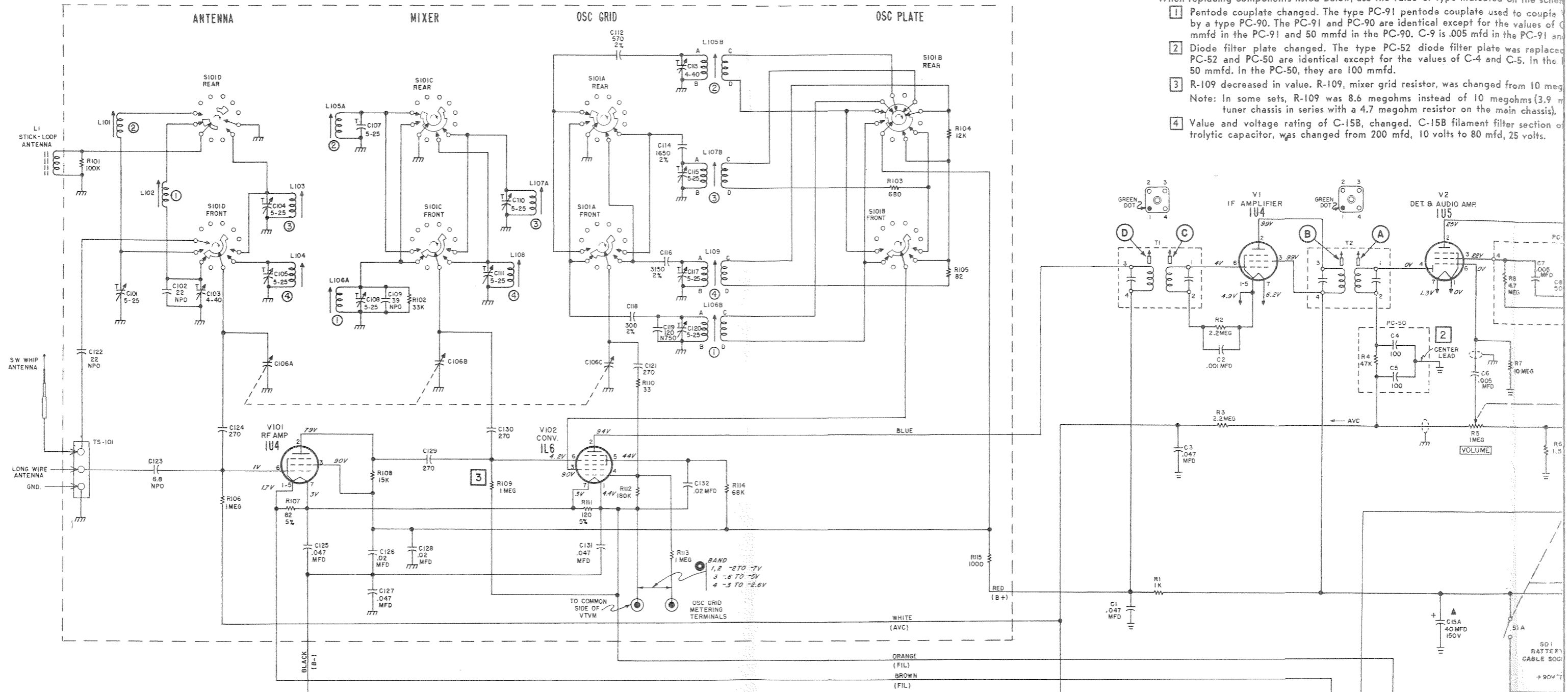


VALUES AND TOLERANCES SHOWN ARE NOMINAL AND VARIATIONS MAY BE FOUND. IT IS RECOMMENDED THAT THE VALUE OF ANY REPLACEMENT CORRESPOND TO THE NOMINAL VALUE OF THE PART BEING REPLACED.

PRODUCTION CHANGES

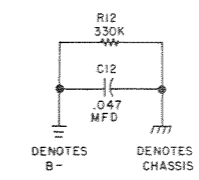
Production changes are indicated on the schematic diagram by the numerical symbol. When replacing components listed below, use the value or type indicated on the schematic.

- 1 Pentode couplate changed. The type PC-91 pentode couplate used to couple L105A by a type PC-90. The PC-91 and PC-90 are identical except for the values of C-4 and C-5. C-4 is .005 mfd in the PC-91 and .010 mfd in the PC-90. C-5 is .005 mfd in the PC-91 and .010 mfd in the PC-90.
- 2 Diode filter plate changed. The type PC-52 diode filter plate was replaced by a type PC-50. The PC-52 and PC-50 are identical except for the values of C-4 and C-5. In the PC-52, C-4 is .005 mfd and C-5 is .010 mfd. In the PC-50, they are 100 mmfd.
- 3 R-109 decreased in value. R-109, mixer grid resistor, was changed from 10 megohms to 1 megohm. Note: In some sets, R-109 was 8.6 megohms instead of 10 megohms (3.9 megohm resistor in series with a 4.7 megohm resistor on the main chassis).
- 4 Value and voltage rating of C-15B, changed. C-15B filament filter section of electrolytic capacitor, was changed from 200 mfd, 10 volts to 80 mfd, 25 volts.

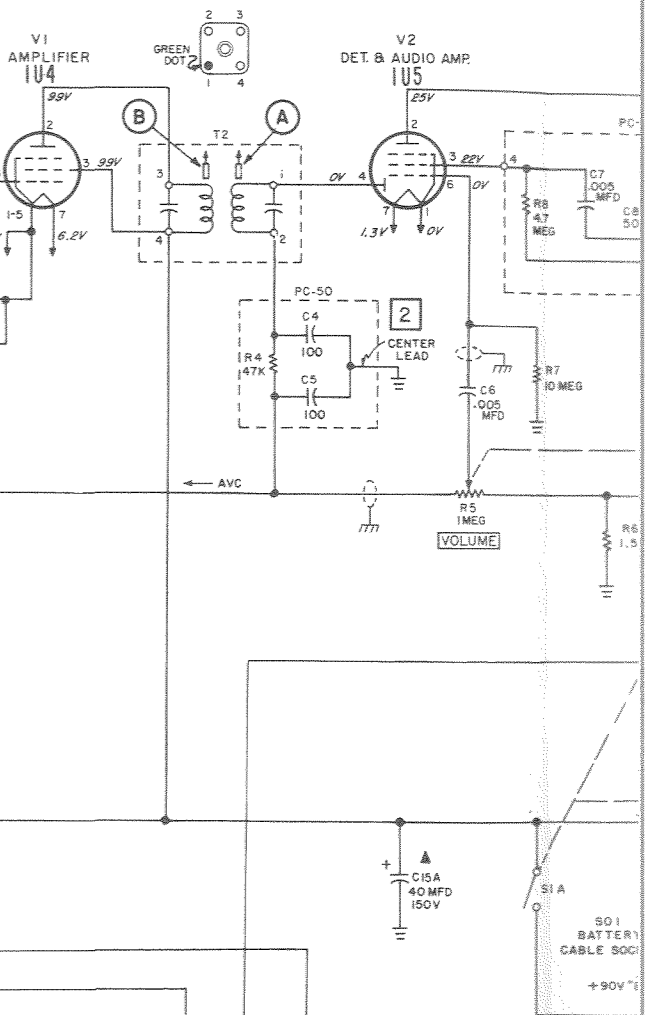


NOTES

1. RESISTORS ARE 1/2 WATT AND 10% UNLESS OTHERWISE SPECIFIED.
2. RESISTANCE IN OHMS AND CAPACITANCE IN MMF UNLESS OTHERWISE SPECIFIED. K=1000.
3. INTERMEDIATE FREQUENCY +455 KC.
4. POWER CHANGEOVER SWITCH S-2 SHOWN IN AC/DC POSITION. FOR BATTERY OPERATION, INSERT LINE CORD PLUG INTO CHASSIS RECEPTACLE (SEE FIG. 6).
5. LINE VOLTAGE: AC/DC OPERATION - 117 VOLTS
BATTERY OPERATION - 90V "B" AND 9V "A"
6. ALL VOLTAGES MEASURED WITH VTVM BETWEEN TUBE SOCKET TERMINALS AND B-($\frac{1}{2}$). VOLTAGES ARE DC AND POSITIVE UNLESS OTHERWISE SPECIFIED.
7. ALL VOLTAGES ARE MEASURED WITH ANTENNA TERMINALS AND STICK-LOOP ANTENNA SHORTED.
8. BAND SELECTOR SWITCH S101 SHOWN IN BROADCAST POSITION. (BAND 2). ALL SWITCH SECTIONS ARE AS VIEWED FROM FRONT OF SET.
9. AVAILABLE AS AN ACCESSORY.
10. VOLTAGE VARIES WITH SETTING OF TUNING GANG.



● DENOTES B-
○ DENOTES CHASSIS



VALUES AND TOLERANCES SHOWN ARE NOMINAL AND VARIATIONS MAY BE FOUND. IT IS RECOMMENDED THAT THE VALUE OF ANY REPLACEMENT CORRESPOND TO THE NOMINAL VALUE OF THE PART BEING REPLACED.

MAIN CHASSIS PARTS LIST

| Schematic Symbol | Description | Hallicrafters Part Number | Schematic Symbol | Description | Hallicrafters Part Number |
|-------------------|--|---------------------------|-------------------------------|---|---------------------------|
| CAPACITORS | | | COILS AND TRANSFORMERS | | |
| C-1,3,16 | .047 mfd. 200V., molded tubular paper | 46BS473L2 | L-1 | Antenna, stick-loop (less mtg. parts and twin-line) | 57B203 |
| **C-2 | .001 mfd. GMV. 500V., ceramic | 47C20A102N | L-2,3 | Choke, RF; 1.0 Mh | 53A265 |
| C-6 | .005 mfd. 450V., ceramic disc | 47A168 | T-1 | Transformer, 1st IF | 50C233 |
| C-10 | 220 mmfd. 500V., ceramic | 47CA20A221K | T-2 | Transformer, 2nd IF | 50C242 |
| C-11 | .0047 mfd. 600V., molded tubular paper | 46BS472L6 | T-3 | Transformer, audio output (part of speaker LS-1) | ----- |
| C-12,17 | .047 mfd. 600V., molded tubular paper | 46BR473L6 | PLUGS AND SOCKETS | | |
| C-13 | .02 mfd. 500V., ceramic disc | 47A242 | PL-1 | Line cord and plug | 87A3592 |
| C-14 | 100 mfd. 25V., electrolytic | 45B214 | SO-1 | Socket, battery cable (less shell) | 10A296 |
| ⊙C-15 | Dual 40 mfd. 150V., 80 mfd. 150V., 80 mfd. 25V., electrolytic | 45B215 | SO-2 | Shell for socket SO-1 above | 10A294 |
| ⊙C-15 | Dual 40 mfd. 150V., 80 mfd. 150V., 200 mfd. 10V., electrolytic | 45B251 | SR-1 | Socket, ballast adapter | 10A507 |
| | | | | Socket, tube; 7 pin miniature | 6B297 |
| | | | | Rectifier, selenium; 100 ma | 27B190 |
| | | | TUBES AND RECTIFIERS | | |
| | | | V-1 | 1U4: IF amplifier | 90X1U4 |
| | | | V-2 | 1U5: detector and audio amplifier | 90X1U5 |
| | | | V-3 | 3V4: audio output | 90X3V4 |
| | | | SWITCHES | | |
| | | | S-1 | Switch, on-off (part of Volume control R-5) | ----- |
| | | | S-2 | Switch, power changeover | 60B593 |
| | | | MISCELLANEOUS | | |
| | | | | Clip, IF transformer mtg. | 76A385 |
| | | | | Cord, dial (specify length) | 38A026 |
| | | | | Dial plate, calibrated: | |
| | | | | for Model TW-500, green | 83C473 |
| | | | | for Model TW-600, brown | 83C474 |
| | | | | for Model S-93, black | 83A487 |
| | | | PC-50 | Diode filter plate (includes R-4, C-4, and C-5) | 49A016 |
| | | | | Grommet, rubber; 1/2" od | 16A190 |
| | | | | Grommet, rubber, 5/8" od | 16A125-1 |
| | | | | Lock, line cord | 76A974 |
| | | | | Mounting base for tube shield | 69A308 |
| | | | | Mounting plate for electrolytic capacitor C-15 | 8A749 |
| | | | PC-90 | Pentode couplate (includes R-8, R-9, R-10, C-7, C-8 and C-9) | 49B043 |
| | | | | Pointer, dial | 82B252 |
| | | | | Shield, tube | 69A306 |
| | | | | Snap-in trimout; for mounting chassis bottom plate | 76A1055 |
| | | | LS-1 | Speaker assembly, 5" PM; 3.2 ohm voice coil (includes output transformer T-3) | 85C161 |
| | | | | Spring, dial cord tension | 75A163 |

⊙ See part number stamped on side of capacitor.

** Guaranteed Minimum Value.

RESISTORS

| | | |
|-----------|---|------------|
| R-1,18,19 | 1000 ohms 10%, 1/2 watt, carbon | 23X20X102K |
| R-2,3 | 2.2 megohms 10%, 1/2 watt carbon | 23X20X225K |
| R-5 | Volume control, 1 megohm (includes on-off switch S-1); for Models TW-500 and TW-600 | 25B1076 |
| | for Model S-93 | 25B1077 |
| R-6 | 1500 ohms 10%, 1/2 watt, carbon | 23X20X152K |
| R-7,14 | 10 megohms 10%, 1/2 watt, carbon | 23X20X106K |
| R-11 | 33,000 ohms 10%, 1/2 watt, carbon | 23X20X333K |
| R-12 | 330,000 ohms 10%, 1/2 watt, carbon | 23X20X334K |
| R-13 | 68 ohms 5%, 1/2 watt, carbon | 23X20X680J |
| R-15 | 100 ohms 5%, 1/2 watt, carbon | 23X20X101J |
| R-16 | 220 ohms 5%, 1/2 watt, carbon | 23X20X221J |
| R-17 | 1500 ohms 5%, 1/2 watt, carbon | 23X20X152J |
| R-20 | 3300 ohms 5%, 1/2 watt, carbon | 23X20X332J |
| R-21 | 2000 ohms 5%, 10 watts; wire-wound | 24B981 |
| R-22 | 82 ohms 5%, 2 watts, carbon | 23X40X820J |

TUNER CHASSIS PARTS LIST

| Schematic Symbol | Description | Hallicrafters Part Number | Schematic Symbol | Description | Hallicrafters Part Number |
|---|-----------------------------------|---------------------------|-------------------|-----------------------------------|---------------------------|
| CAPACITORS | | | CAPACITORS | | |
| C-101,104,105,107,108,110,111,115,117,120 | 5-25 mmfd.; ceramic trimmer | 44A446 | C-106 | Tuning capacitor, 3 section | 48C326 |
| *C-102,122 | 22 mmfd. 10%, NPO, 500V.; ceramic | 47X20CG220K | *C-109 | 39 mmfd. 5%, NPO, 500V.; ceramic | 47X30CG390J/D |
| C-103,113 | 4-40 mmfd.; ceramic trimmer | 44B443 | C-112 | 570 mmfd. 2%, 500V.; silver mica | 47X20C571G |
| | | | C-114 | 1650 mmfd. 2%, 500V.; silver mica | 47A445 |
| | | | C-116 | 3150 mfd. 2%, 500V.; silver mica | 47B446 |

* USE EXACT REPLACEMENT ONLY

TUNER CHASSIS PARTS LIST (Cont.)

| Schematic Symbol | Description | Hallicrafters Part Number | Schematic Symbol | Description | Hallicrafters Part Number |
|-------------------------------|--|---------------------------|--|------------------------------------|---------------------------|
| CAPACITORS (Cont.) | | | | | |
| C-118 | 300 mmfd. 2% 500V.; silver mica | 47X20C301G | L-105 | Coil, oscillator and mixer; band 2 | 51B1827 |
| *C-119 | 120 mmfd. 5%, N750, 500V.; ceramic | 47X30UK121J/D | L-106 | Coil, oscillator and mixer; band 1 | 51B1826 |
| C-121,124,129,130 | 270 mmfd. 10%, 500V.; ceramic | 47CA20A271K | L-107 | Coil, oscillator and mixer; band 3 | 51B1828 |
| *C-123 | 6.8 mmfd. 10%, NPO, 500V.; ceramic | 47X20CG068K/D | L-108 | Coil, mixer; band 4 | 51B1830 |
| C-125,131 | .047 mfd. 20%, 200V.; molded tubular paper | 46BS473L2 | L-109 | Coil, oscillator; band 4 | 51B1829 |
| C-126,128,132 | .02 mfd. 500V., ceramic disc | 47A242 | TUBES | | |
| C-127 | .047 mfd. 20%, 600V.; molded tubular paper | 46BS473L6 | V-101 | 1U4: RF amplifier | 90X1U4 |
| RESISTORS | | | | | |
| R-101 | 100,000 ohms 10%, 1/2 watt, carbon | 23X20X104K | V-102 | 1L6: converter | 90X1L6 |
| R-102 | 33,000 ohms 10%, 1/2 watt, carbon | 23X20X333K | MISCELLANEOUS | | |
| R-103 | 680 ohms 10%, 1/2 watt, carbon | 23X20X681K | Bushings and gear assembly (less springs and set screws) | | |
| R-104 | 12,000 ohms 10%, 1/2 watt, carbon | 23X20X123K | Grommet, rubber; 1/2" od | | |
| R-105 | 82 ohms 10%, 1/2 watt, carbon | 23X20X820K | (gang mounting) | | |
| R-106,113 | 1 megohm 10%, 1/2 watt, carbon | 23X20X105K | Pinion and pulley assembly | | |
| R-107 | 82 ohms 5%, 1/2 watt, carbon | 23X20X820J | Ring, retaining (for pulley and rear of band selector shaft) | | |
| R-108 | 15,000 ohms 10%, 1/2 watt, carbon | 23X20X153K | Ring, retaining (for front of band selector shaft) | | |
| R-109 | 1 megohm 10%, 1/2 watt, carbon | 23X20X105K | Shield, tube; 7 pin miniature | | |
| R-110 | 33 ohms 10%, 1/2 watt, carbon | 23X20X330K | Snap-in trimount (for mounting insulator strip on tuner) | | |
| R-111 | 120 ohms 5%, 1/2 watt, carbon | 23X20X121J | Socket, tube; 7 pin miniature | | |
| R-112 | 180,000 ohms 10%, 1/2 watt, carbon | 23X20X184K | Spring, gear; 13/32" lg. | | |
| R-114 | 68,000 ohms 10%, 1/2 watt, carbon | 23X20X683K | Switch assembly, Band Selector (includes center coil and trimmer mtg. bkt. of tuner) | | |
| R-115 | 1000 ohms 10%, 1/2 watt, carbon | 23X20X102K | Terminal strip, antenna | | |
| COILS AND TRANSFORMERS | | | | | |
| L-101 | Coil, antenna loading; band 2 | 51B1832 | S-101 | | |
| L-102 | Coil, antenna loading; band 1 | 51B1831 | | | |
| L-103 | Coil, antenna; band 3 | 51B1833 | | | |
| L-104 | Coil, antenna; band 4 | 51B1834 | TS-101 | | |

CABINET PARTS LIST

| Description | Hallicrafters Part Number | Description | Hallicrafters Part Number | Description | Hallicrafters Part Number |
|---|---------------------------|--|---------------------------|---|---------------------------|
| Antenna, telescoping whip (with lead and lug) | 57B204 | Cabinet replacement parts: (Cont.) | | Front panel assembly, plastic: | |
| Baffle board: | | Grip, finger; front door: | | for Model TW-500, green... | 7D531 |
| for Models TW-500 and TW-600, gold | 7C532 | for Models TW-500 and TW-600 | 30B302 | for Model TW-600, brown | 7A533 |
| for Model S-93, silver | 7A590 | for Model S-93 | 30B289 | for Model S-93, gray | 7A589 |
| Cabinet, complete with carrying handle, map, mtg. feet, fiber eyelet, front door finger grip, and hinges: | | Handle, carrying: | | Knob, Band Selector: | |
| for Model TW-500, green | | for Model TW-500, green | 121-331 | for Model TW-500, green | 15C713 |
| lizigator leatherette | 78F1082 | for Model TW-600, brown (with mtg. hdwe.) | 121-332 | for Model TW-600, brown | 15A718 |
| for Model TW-600, top-grain cowhide | 78F1084 | for Model S-93, gray | 8A2593 | for Model S-93, gray | 15A795 |
| for Model S-93, gray leatherette | 78A1147 | Hinge assembly, front door: | | Knob, Tuning: | |
| Cabinet replacement parts: | | Left hand (viewed from front): | | for Model TW-500, green | 15A710 |
| Eyelet, fiber; for whip antenna (mounted in top of cabinet): | | for Models TW-500 and TW-600 | 30B312 | for Model TW-600, brown | 15A715 |
| for Model TW-500, green | 8A2350 | for Model S-93 | 30A335 | for Model S-93, gray | 15A794 |
| for Model TW-600, brown | 8A2351 | Right hand (viewed from front): | | Knob, Volume: | |
| for Model S-93, gray | 8A2592 | for Models TW-500 and TW-600 | 30B311 | for Model TW-500, green | 15B728 |
| Foot, mtg.; rubber: | | for Model S-93 | 30A334 | for Model TW-600, brown | 15A729 |
| for Model TW-500 and S-93, black | 16A347 | Map: | | for Model S-93, gray | 15A793 |
| for Model TW-600, brown | 16A396 | for Model TW-500, green | 14C382 | Operating Instruction Booklet: | |
| | | for Model TW-600, brown | 14C384 | for Models TW-500 and TW-600 | 94X1255 |
| | | for Model S-93, gray | 14C392 | for Model S-93 | 94X1346 |
| | | Eyelet, fiber; for whip antenna (mounted in bottom of cabinet) | 8A2348 | Spacer, fiber; for whip antenna (3/4" od, 1/4" id, 9/32" t) | 8A2370 |

* USE EXACT REPLACEMENT ONLY

NOTES



BOOK NO. 94x1434

135

TX-500 (pages 1, 2, and 2x)

TX-600 (pages 1 and 2x)

2-93 (Run 1)